









Sicht von

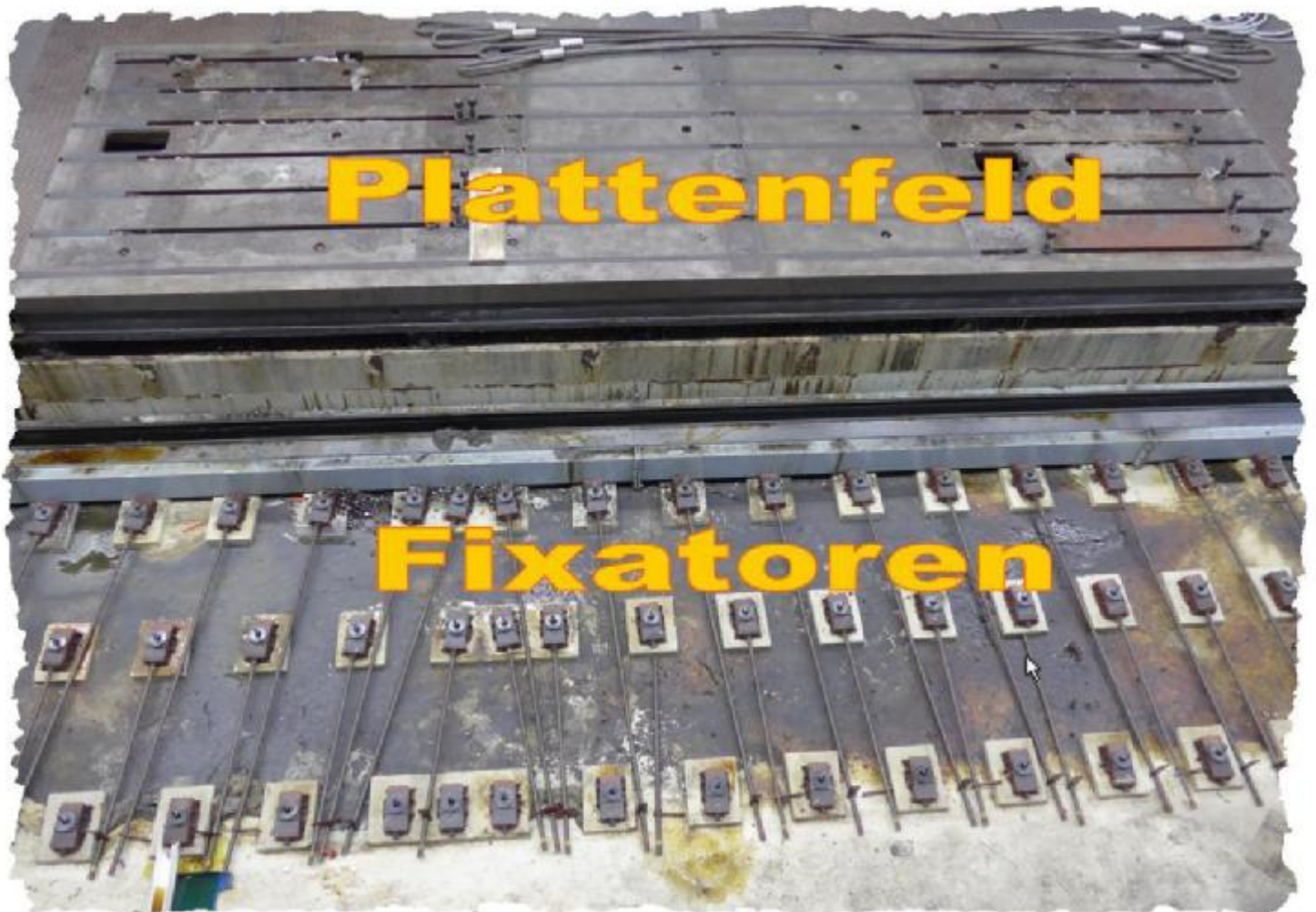


Hinten / Oben

Werkzeugwechsler (60 Plätze)



Ölkühler



Plattenfeld

Fixatoren



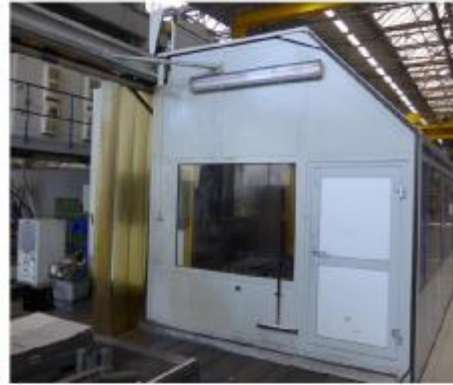
**Kühlmitteleanlage
mit Bandfilter**



Späneförderer

Plattenfeld





Dörries Scharmann EcoCut 1.6 XZ / TDV 2+3

Pos.	Beschreibungstext	St./km/h
	General overhaul 2007: New control Siemens Sinumerik 840D After overhauling ECOCUT 1 was only operated for a few months New drive motors, guide rails, new control cabinets	
1	Working area X=7000mm / Y=1600mm / Z=800mm Pinole stroke w=600mm	
2	round tables / plate surface clamping surface Large panel Round table TDV 2 max. Workpiece weight 6t / clamping surface 1000x1000 Round table TDV 3 max. Workpiece weight 12t / mounting surface 1250x1600	
3	Power Max torque 2300Nm Spindle diameter 125mm Spindle conical tool holder ISO SK 50 Feed rates 12000 mm / min // w-axis 6000 mm / min	
4	CNC control with glass scales new in 2007 Siemens Sinumerik 840D	
5	Accessories Two new high-grade angle heads 2 Rotary tables see above Cooling device with belt filter Chain chip conveyor Enclosure divided, sliding door with exhaust BWF Fixator machine bed and panel Switch cabinet Power supply interference suppression	