



HOLEC H

Generator 1

Generator 2

Transformer







Generator 1

Generator 2

Transformer

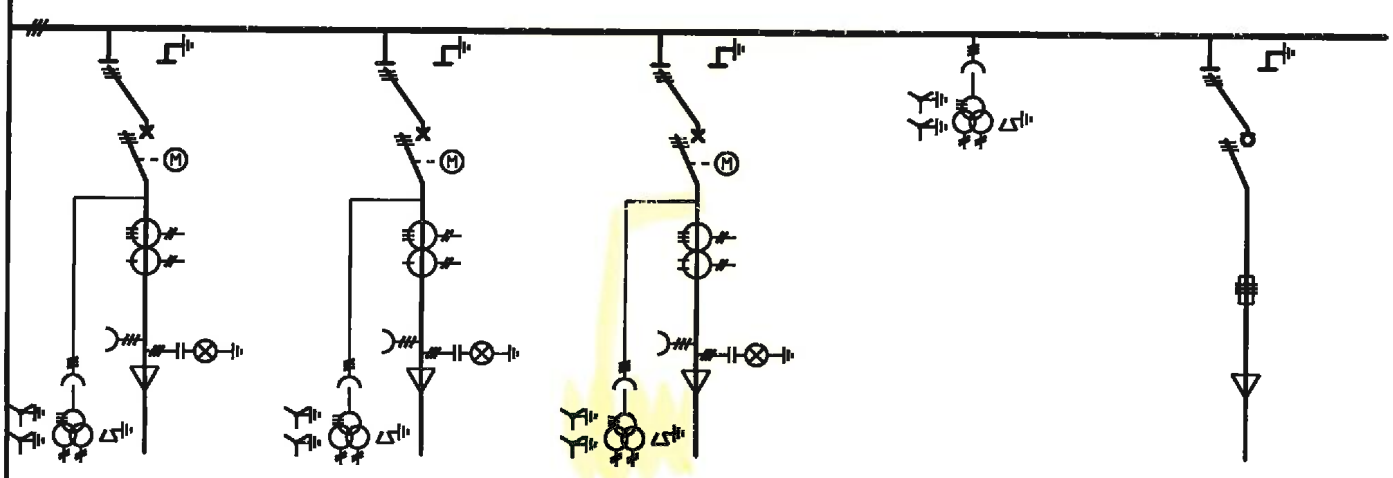
HOLEC H  
Innovac SYS





1	2	3	4	5	VELD / CODERING KLANT
26181	26182	26183	26184	26185	NUMMER VAST DEEL
NVS14BA-1706	NVS14BA-1706	NVS14BA-1706	MEETVELD	VSVS14BA-17B1	TYPE VAST DEEL
VK1-VL	VK2-VL	GR1	MEETVELD	STATIONSTRAFO	AARDINGSSCHAKELAAR
					OPSCHRIFT
R3-C-153599 IV	R3-C-153599 VII	R3-C-153599 V	R3-C-153599 VI		STROOMKRINGSCHEMA
3x300/5A	3x300/5A	3x300/5A			STROOMTRANSFORMATOREN
15VA KL.5P10	15VA KL.5P10	5VA KL.5P10			
BEVEILIGING	BEVEILIGING	BEVEILIGING			
1x300/5A	1x300/5A	2x300/5A			
10VA KL.1 Fs8	10VA KL.1 Fs8	15VA KL.1 Fs7			
METING (L2)	METING (L2)	METING (L1-L3)			
1x FAGET EIV72 0-360A (L2)	1x FAGET EIV72 0-360A (L2)	1x LANDIS & GYR ZFB210 T113 CSR14	1x FAGET EIV72 0-15kV KL.1.5 (L1-L2)		METERS
1x ALSTOM PQ741	1x ALSTOM PQ741	1x ALSTOM KCGG142	1x DOLD BA9043/001		BEVEILIGINGSRELAIS
1x DOLD BA9043/001	1x DOLD BA9043/001	1x DOLD BA9043/001			
48V DC	48V DC	48V DC			RELAIS / MOTOR INSCHAKELING
					INSCHAKELSPOEL / VEERSPANMOTOR
					INSCHAKELSPOEL
					INSCHAKEL / HOUDSPOEL
48V DC	48V DC	48V DC			SPANNINGSUITSCHAKELSPOEL
					STROOMUITSCHAKELSPOEL
					NULSPANNINGSSPOEL
					SPERSPOEL
48V DC	48V DC	48V DC			SPANNINGSTRANSFORMATOREN
3x $\frac{13750}{\sqrt{3}} / \frac{100}{\sqrt{3}} / \frac{100}{3}$ V	3x $\frac{13750}{\sqrt{3}} / \frac{100}{\sqrt{3}} / \frac{100}{3}$ V	3x $\frac{13750}{\sqrt{3}} / \frac{100}{\sqrt{3}} / \frac{100}{3}$ V	3x $\frac{13750}{\sqrt{3}} / \frac{100}{\sqrt{3}} / \frac{100}{3}$ V		
SEC.: 50VA KL.1	SEC.: 50VA KL.1	SEC.: 50VA KL.1	SEC.: 50VA KL.1		
TERT.: 30VA KL.3P	TERT.: 30VA KL.3P	TERT.: 30VA KL.3P	TERT.: 30VA KL.3P		
				COOPER BUSSMAN AILS J	OVERSPANNINGSAFLEIDER
				17,5kV - 50A	SMELTVEILIGHEDEN
XLPE	XLPE	XLPE		XLPE	TYPE
1x3x240 AL	1x3x240 AL	1x3x240 AL		3x1x16 CU	DOORSNEDE
					KABELS

OPM: VELDEN 1 T/M 3 OMGEBOUWD OP PROJECT 154014



**HOLEC HI**

tek.nr.	R3-C-153599 1/2	blad 2
rev.	E	2 bl.
Eaton Holec Medium Voltage		



Eaton Electric N.V. Medium Voltage  
P.O.Box 23, 7550 AA Hengelo, Netherlands

**EATON**

**Holec**

**M . V . SWITCHGEAR**

**IEC 60298**

system : **SVS/08 r1.3**

serial no. **26183**

year of constr. **2003**

w.o. no. **153599**

$U_r$  **17.5 kV**

$f_r$  **50 Hz**

**BUSBAR SYSTEM**

**IEC 60298**

$I_r$  **800 A**

$I_k$  **20 kA**

$t_k$  **1 s**

$I_{rT-off}$  **630 A**

$I_p$  **50 kA**

**CIRCUIT-BREAKER**

**IEC 60056**

type : **NVS 14BA-1706 r1.3**

$U_r$  **17.5 kV**

$U_p$  **95 kV**

$I_r$  **630 A**

$I_k$  **20 kA**

$t_k$  **1 s**

$I_{sc}$  **20 kA**

$I_{ma}$  **50 kA**

**CURRENT TRANSFORMER**

**IEC 60044-1**

type : **CTS**

make : **HOLEC**

300/5A

**L1-L2-L3**

5VA Cl.5P10

300/5A

**L1-L3**

15VA Cl.1 FS7

/ A

VA Cl.

**20kA 1s 50 kA**

**VOLTAGE TRANSFORMER**

**IEC 60044-2**

type : **YH03**

make : **SADTEM**

A-N 13750/ $\sqrt{3}$ V

a1-n 100/ $\sqrt{3}$ V

50VA Cl. 1

Pth. 300 VA

da-dn 100/3V

30VA Cl. 3P

Ith. 3A

17.5/38/95

1,9  $U_r$  - 8 h



Eaton Electric N.V. Medium Voltage  
P.O.Box 23, 7550 AA Hengelo, Netherlands

**EAT-N**

**Holec**

**M . V . SWITCHGEAR**

**IEC 60298**

system : **SVS/08 r1.3**

serial no.

**26181**

year of constr.

**2003**

w.o. no.

**153599**

$U_r$  **17.5 kV**

$f_r$

**50 Hz**

**BUSBAR SYSTEM**

**IEC 60298**

$I_r$  **800 A**

$I_k$

**20 kA**

$t_k$

**1 s**

$I_{rT-off}$  **630 A**

$I_p$

**50 kA**

**CIRCUIT-BREAKER**

**IEC 60056**

type : **NVS 14BA-1706 r1.3**

$U_r$  **17.5 kV**

$U_p$

**95 kV**

$I_r$  **630 A**

$I_k$

**20 kA**

$t_k$

**1 s**

$I_{sc}$  **20 kA**

$I_{ma}$

**50 kA**

**CURRENT TRANSFORMER**

**IEC 60044-1**

type : **CTS**

make : **HOLEC**

300/5A

**L1-L2-L3**

15VA Cl.5P10

300/5A

**-L2-**

10VA Cl.1 FS8

/ A

VA Cl.

**20kA 1s 50 kA**

**VOLTAGE TRANSFORMER**

**IEC 60044-2**

type : **YH03**

make : **SADTEM**

A-N 13750/ $\sqrt{3}$ V

a1-n 100/ $\sqrt{3}$ V 50VA Cl. 1

Pth. 300 VA

da-dn 100/3V 30VA Cl. 3P

Ith. 3A

17.5/38/95

1,9  $U_r$  - 8 h



Eaton Electric N.V. Medium Voltage  
P.O.Box 23, 7550 AA Hengelo, Netherlands

**EAT•N**

**Holec**

**M . V . SWITCHGEAR**

**IEC 60298**

system : **SVS/08 r1.3**

serial no. **26184**

year of constr. **2003**

w.o. no. **153599**

$U_r$  **17.5 kV**

$f_r$  **50 Hz**

**BUSBAR SYSTEM**

**IEC 60298**

$I_r$  **630 A**

$I_k$  **20 kA**

$t_k$  **1 s**

$I_p$  **50 kA**

Eaton Electric N.V. Medium Voltage  
P.O.Box 23, 7550 AA Hengelo, Netherlands

**EAT•N**

**Holec**

**M . V . SWITCHGEAR**

**IEC 60298**

system : **SVS/08 r1.3**

serial no. **26184**

year of constr. **2003**

w.o. no. **153599**

$U_r$  **17.5 kV**

$f_r$  **50 Hz**

**MEASURING PANEL**

**IEC 60298**

$I_k$  **20 kA**

$t_k$  **1 s**

$I_p$  **50 kA**

**VOLTAGE TRANSFORMER**

**IEC 60044-2**

type : **VCO**

make : **ARTECHE**

A-B 13750/ $\sqrt{3}$ V

a1-b 100/ $\sqrt{3}$ V 50VA Cl. 1 Pth. 600 VA

da-dn 100/3V 30VA Cl. 3P Ith. 3A

17.5/38/95

1,9  $U_r$  - 8 h