

*Indassol*

**FOR SALE**  
**FLEXIBLE SL90 F85 64T/SM + COLD GLUE**  
**8/8/130 S3/E3 LABELLING MACHINE**

**LOCATION: NELSON, UNITED KINGDOM**



## TECHNICAL SPECIFICATIONS

---

### FLEXIBLE SL90 F85 64T/SM + Cold Glue 8/8/130 S3/E3

Equipped with 3 (three) cold glue modules, to apply:

- one front body label
- one back body label
- one neck label

on round glass bottles.

Bottle min/max height: 150 / 350 mm

Bottle min/max diameter: 50 / 100mm

Label min/max height: 20 / 120 mm

Label min/max length: 20 / 130 mm

Max. Machine over-speed: up to **72,000 BPH on Cold Glue**

Max over-speed with orientation: **72,000 BPH** (subject to evaluation of bottle samples)

Max over-speed with PSL application: 66,000 BPH (subject to label validation by our Engineering Dept)

The above technical specifications are based on the bottle specification reported in the original enquiry and they will be validated after bottle/ label drawings or samples evaluation.



- Cold glue and/or PSL application
- Pre-cut paper and/or OPP label
- Partial label
- Glass bottle



No. Item	Unit	EMPLOYER			CONTRACTOR			Notes
<b>LABELLER and LABEL DETECTOR</b>		500	600		500	600		Bottles
<b>GENERAL SPECIFICATIONS</b>								
Make/type					SIDEL SL90 F85 64T 8/8/130 S3/E3			
System					COLD GLUE MODULAR			
No. of bottle tables in machine	NO.				64			
No. of labeling stations	NO.				3			
No. of glue pallets	NO.				8			
No. of gripper cylinders	NO.				8			
Machine pitch	mm				125.6			
Maximum length of label	mm				130			
Maximum variation of bottle height	mm				± 1,5			
Maximum variation of bottle diameter	mm				± 1,2			
Reject of falsely labelled bottles								Together with the underfills
Conveyor elevation	mm				1.200 ±50mm			Low level machine: 1100-1200 mm
<b>OUTPUT and EFFICIENCY</b>								
Nominal output	bph				70.000			DIN 8782 §4.1
Minimum set speed	bph				10.000			
Potential maximum speed	bph				72.000			Speed range
Efficiency factor					>0.98			DIN 8782 §4.5
Changeover time, bottle size	min				<15 + 5 min. for rump-up			
Changeover time, bottle dressing (same bottle)	min				<10 each label			
<b>REQUIREMENTS and GUARANTEES</b>								
Bottles missing one or more labels	%				<0.03			Front, Back and Neck Labels applied
Slope of label axis to centre line of bottle					<1.5°			
Slip from centre line and normal position, max	mm				± 1			Neck and body label, vertical/symmetrical axis
Bottle and label damage	%				Nil			
Overtuned bottles	%				Nil			
Noise contribution	dB(A)				<85			
<b>CONSUMPTION and LOADS</b>								
Water	l/h				30			
Glue consumption	g/m2				16 to 20			
Compressed air consumption (mean)	Nm3/h				120			
Installed electrical load	kVA				75			
Electrical power consumption (mean)	kW				40			



## MAIN BENEFITS

---

### Efficiency

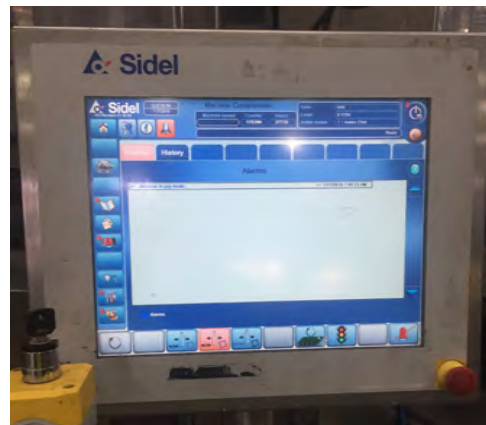
- The easily accessible robust machine and its labeling modules have a clean, ergonomic design.
- The bottle handling module (bottle infeed and discharge) means the machine can be configured in line, either in parallel or in other layouts, according to the space available.
- Predictive maintenance thanks to minimal use of parts subject to wear and direct servomotors.

### Flexibility

- The structure of the modules is patented by Sidel: the structure can be adapted to the slope of the floor by means of special fixed tilting feet and a supporting plate for the independently moving and tilting of the labeling units
- The horizontal alignment of the labels on containers can be adjusted electronically Predictive maintenance thanks to minimal use of parts subject to wear and direct servomotors.
- Very fast format changeovers
- Easy machine access makes it very efficient: the procedures are fast and simple, and the Sidel patented safety guards are pneumatically assisted and independent.
- A vision system combined with bottle platforms servo motor drive systems orientate the bottles to ensure that even the most complex formats are perfectly positioned.

### Environmental impact

- Higher energy efficiency thanks to the drastic reduction of mechanical transmission.
- Running costs are low and energy costs have been reduced thanks to fast efficient cleaning.
- Very lightweight adhesive labels can be handled.
- Low noise levels thanks to the use of servomotors.



- It is the best state of the art labeling flexibility and modularity for self-adhesive (PSL) and/or Cold-glue pre-cut labels on the same machine.
- Ideal for high speeds, the SL 90 is designed based on the very latest technology in terms of:
  - Production efficiency
  - Production quality
  - Production cost
  - Maintenance cost
  - Environment sustainability
  - User friendly

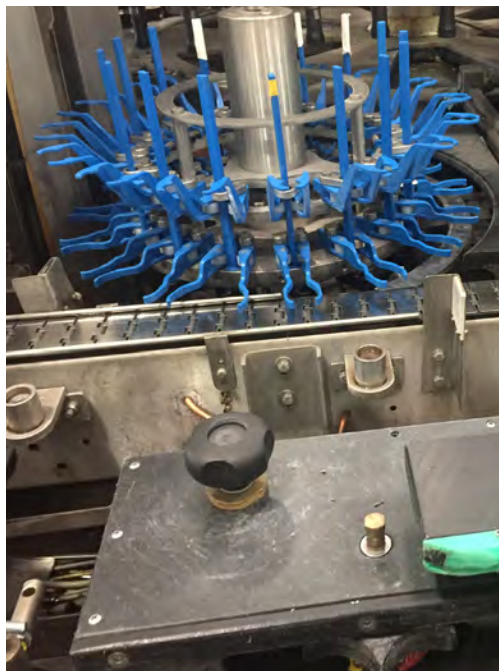
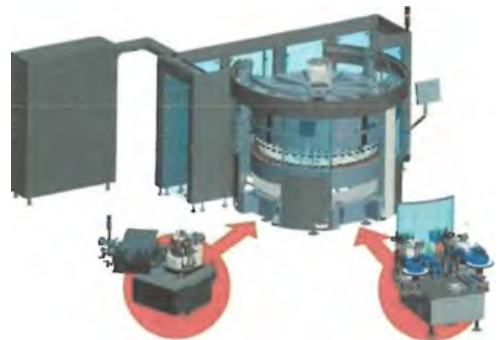


### Cold Glue Labelling Station

- Label station is stainless steel made with a water I glue infiltration proof device.
- Label station controlled by direct servomotor. Very fast format changeovers
- Manual adjustment of horizontal position according to the different bottle diameters to be handled.
- Electric adjustment of vertical position on demand.
- Lubrication by forced oil circulation, driven by gear pump with oil shortage alarm.
- Stainless steel glue roller, pallets (quick release type) with rubber coated surface.
- Label magazine with manual (or automatic as an option) loading system.
- Automatic device for label transfer control ("No bottle - no label").
- Automatic glue scraper opening/closure control according to containers flow ("No bottle - no glue").
- C.I.P. system on each station
- Automatic glue pump for each labelling station, complete with integrated glue heater.

MECHANICAL COMPONENTS	CONSTRUCTOR / SUPPLIER
GEARMOTORS	SEW
SUPPORTS & CONVEYOR SYSTEM FITTINGS	REXNORD, SYSTEM-PLAST
BALL BEARINGS	SKF, NSK, NTN, SNR
ROLLER BEARINGS	SNR, INA, SKF
SELF-LUBRICATING BUSHINGS	SKF, IGUS
"MIM" SEALING RINGS	ANGST&PFISTER, FP
"O" RINGS	ANGST&PFISTER, FP
CONVEYING CHAINS	REXNORD,MCC
TRANSMISSION BELTS	CHIARAVALLI, POGGI, M.E.C., DAYCO
TOOTHED PULLEYS	CHIARAVALLI, POGGI, M.E.C.
GEARS (on cold glue label station only)	STEEL C40
HANDLING ELEMENTS	ELESA,BOTECO,SYSTEM-PLAST
AIR TREATMENT DEVICES	FESTO
PNEUMATIC CYLINDERS	FESTO
SOLENOID VALVES	FESTO
HOSES	POLIAMMIDE "PATI"
PIPE FITTINGS	METAL-WORK
METAL STRUCTURE TREATMENT	NICKEL TREATMENT
PAINTING TREATMENT	PRIMER EPOSSIDICO + RAL 7035
SAFETY & PROTECTION SHIELDS	AISI 304 STAINLESS STEEL (INOX)
SAFETY & PROTECTION DOORS	LEXAN & GLASS

- Simple and quick modules change-over
- Precise modules interface
- Ready to run module status
- Out line label change over

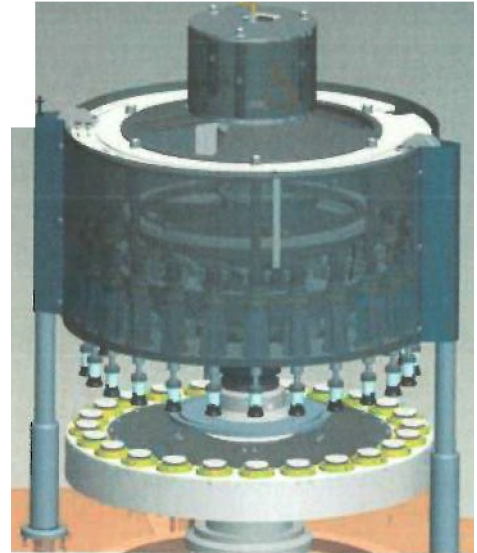


ELECTRICAL and AUTOMATION COMPONENTS	CONSTRUCTOR / SUPPLIER
MAIN CABINET	ILINOX
ONBOARD CABINETS & JUNCTION BOXES	ILINOX, ROSE, RITTAL
MAIN SWITCH	SIEMENS
VOLTAGE TRANSFORMERS	CE, OCE, MOELLER
24 Vdc POWER SUPPLIES	SIEMENS, CABUR
MAGNETOTHERMIC SWITCHES	SIEMENS
AUTOMATIC PROTECTION SWITCHES	SIEMENS
FUSE HOLDERS	SIEMENS
FUSES	WEBER
POWER CONTACTORS	SIEMENS
AUXILIARY RELAYS	OMRON, WEIDMULLER
SAFETY RELAYS	PILZ (24 Vdc)
CONTROL LIMIT SWITCHES	OMRON, MAYR, PILZ
SAFETY LIMIT SWITCHES	PILZ
INDUCTIVE SENSORS	PEPPERL & FUCHS
PHOTOELECTRIC SENSORS on CONVEYORS	SICK
PHOTOELECTRIC CONTROL SENSORS inside MACHINE	SICK
PUSHBUTTONS & SELECTORS	TELEMECANIQUE
FLASHING & ACOUSTIC DEVICES	SIEMENS/ TELEMECANIQUE
FREQUENCY CONVERTERS (INVERTERS)	DANFOSS
PLC & PROGRAMMABLE CONTROLLERS (CPU)	ELAU / B&R
PLC & PROGR.CONTROLLERS {INPUTS/OUTPUTS}	B & R serie X20 + X67
OPERATOR PANEL	B & R COLOR TOUCHSCREEN 15"
ENCODERS	SICK
TERMINALS	WEIDMULLER
CABLES {GENERAL APPLICATIONS}	LAPP KABLE, LUMBERG
CABLES {DATA APPLICATIONS}	BELDEN
WIRES (GENERAL APPLICATIONS)	ICEL, GENERAL CAVI
CONDUITS & SHEATS	RTA
CONDUITS & SHEAT FITTINGS	RTA
CONNECTORS	ILME, HARTING
BRUSHLESS MOTORS	ELAU/MPC
BRUSHLESS MOTOR DRIVERS	ELAU
MOBILE PUSH-BUTTON PANELS	ALLEN BRADLEY
LIGHTING inside MAIN CABINET	STEGO / RITTAL
AIR CONDITIONING	RITTAL

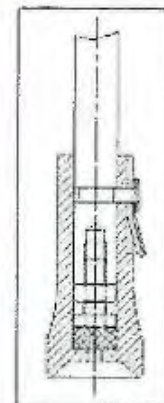
**For further information Call: + 44 (0) 20 3206 1208**

**Email: [info@indassol.com](mailto:info@indassol.com)**

- Central carousel upper part
  - Very solid carbon-steel construction
  - Reliable hard work at 24/7
  - Low maintenance requirement
  - Long time durability of each single part

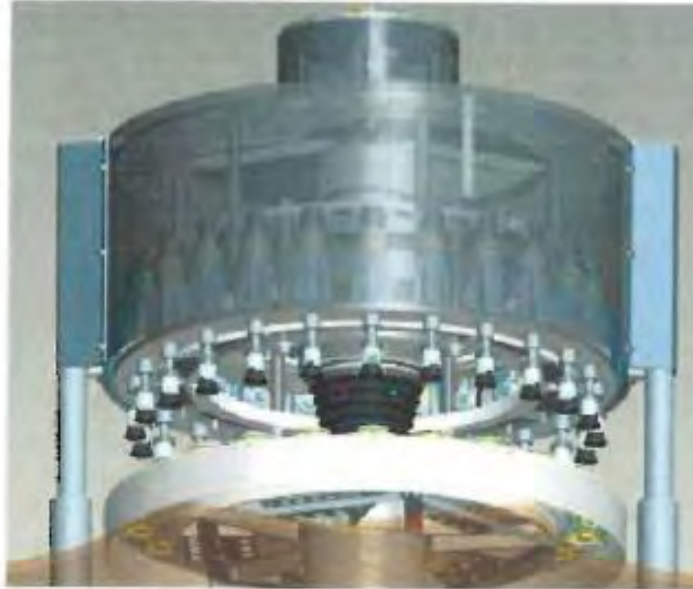


- Central carousel upper part
  - Solid head-gripper jack, maintenance free
  - Sliding roller guarantees smooth rotation and low part wearing
  - Pneumatic bottle height compensation
  - Bottle centering bell suitable for various bottle neck dimensions
  - Quick-release locking clips system





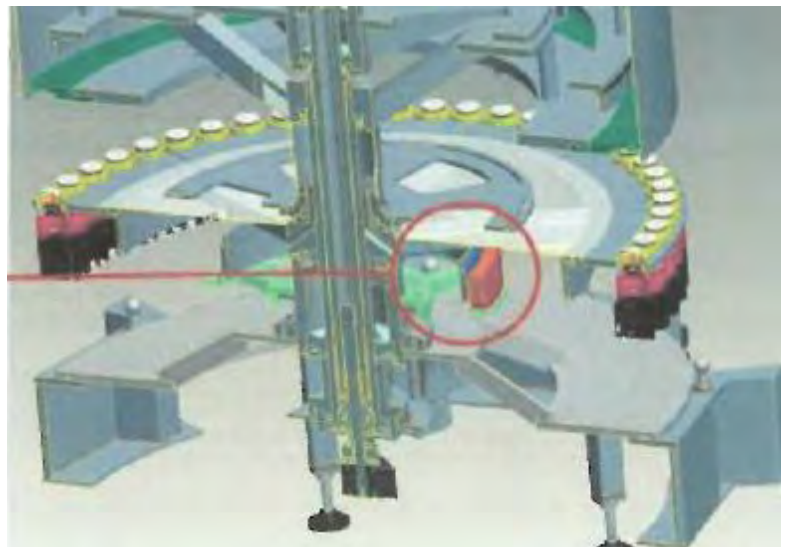
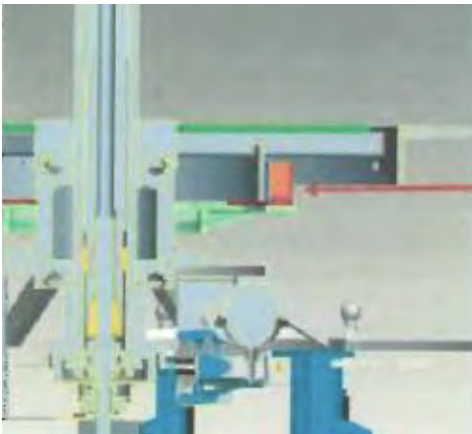
- Central carousel lower part
- Water proof protection
- Centralised grease lubrication
- Auto positioning bottle platform



- Bottle platform TORQUE servo-motor
- Horse-work design and construction
- Direct platform transmission
- Maintenance free device, IP 65 grade protection
- Suitable for bottle orientation in combination with video-camera detection
- Easy parameters setting via HMI



- Central carousel drive system
  - Carousel rotation made by "Linear-curve" motor
  - No mechanical transmission or gears installed
  - Electronic interface with modules
  - Vibration and noise free
  - Maintenance free



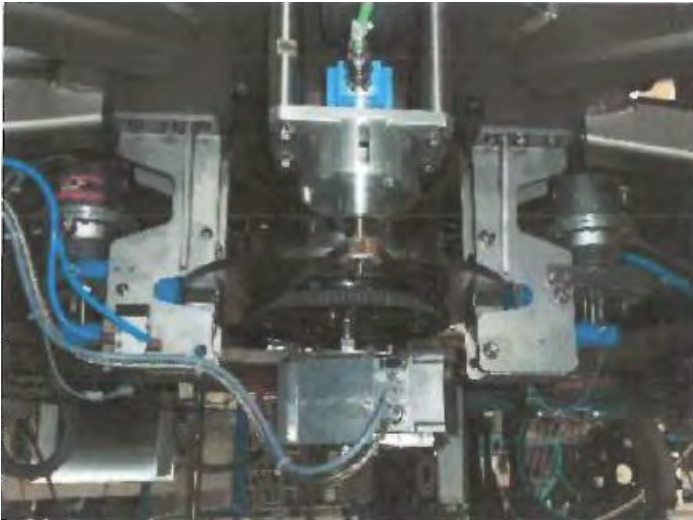
- Linear-curve motor
  - Great technical innovation with simple solution
  - Basically never-end components life
  - Clockwise and anti-clockwise rotation possibility
  - Unlimited speed scale adjustment



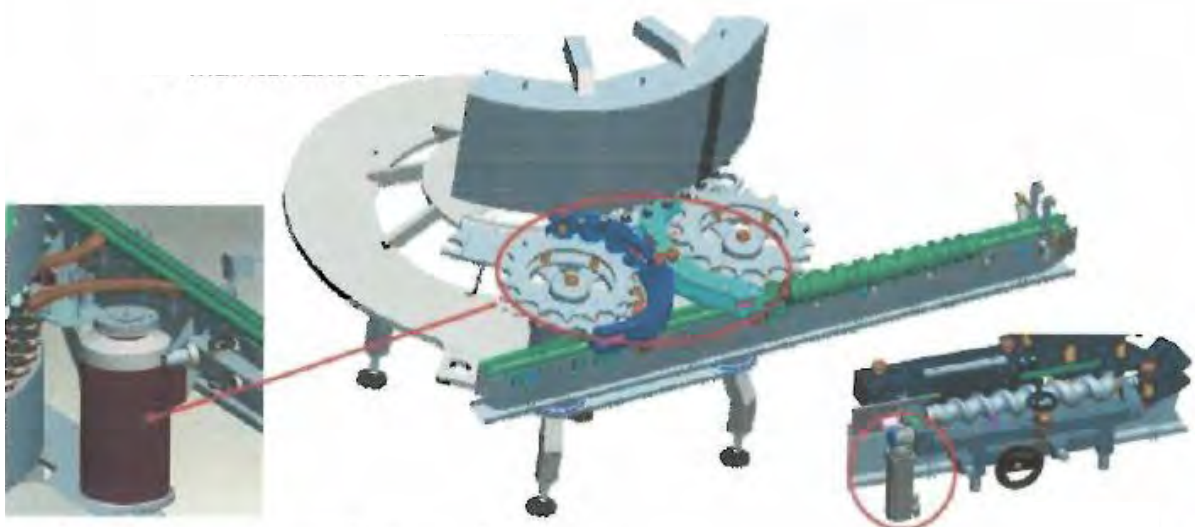
3 Magnets on central disc



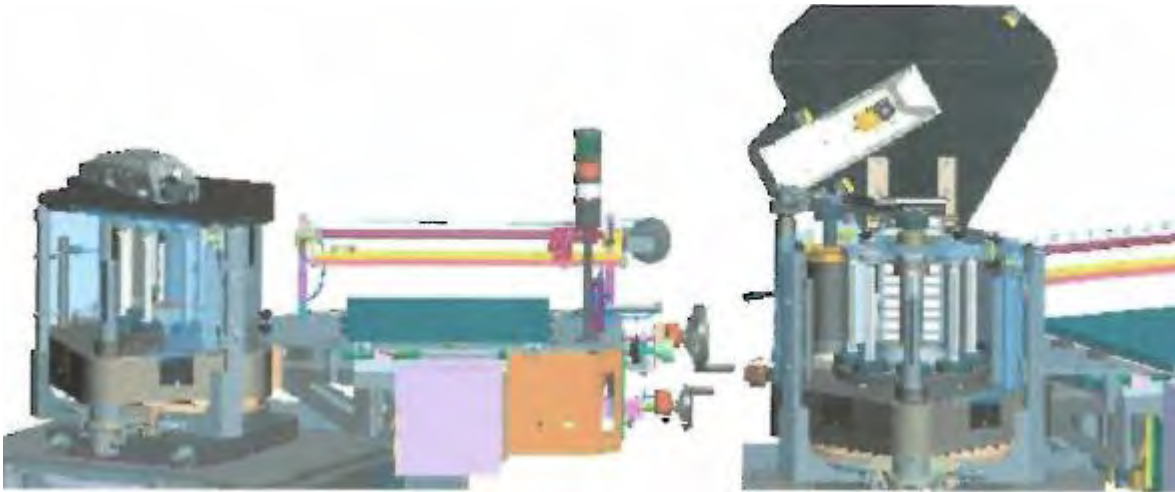
- Central carousel drive system
- Solid twin electro-pneumatic break
- Instant machine stop in case of any emergency cut-off



- Bottle handling
- Star-wheels and screw rotation driven by dedicated servo-motor
- No mechanical transmission or gears installed
- Electronic interface with modules
- Vibration and noise free
- Maintenance free



- CG Labeling Station
  - Main structure and parts stainless steel made
  - Self-drive system by means of servo-motor
  - Precise and reliable label handling mechanism
  - Quick release and repetitive change parts positioning



- CG Labelling Station Details
  - Very solid design and construction
  - Ergonomic design for easy change-over and maintenance
  - Precise and reliable label handling mechanism
  - Water-proof protection



- CG Labelling Station Details
  - Precise pallet shaft self-positioning
  - Shaft base special design



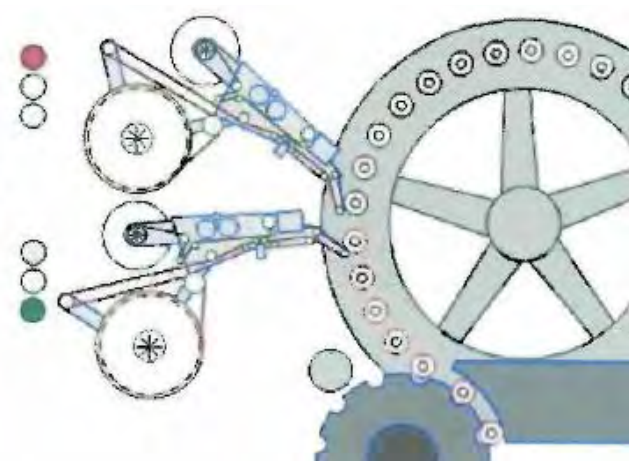
- Self Adhesive (PS) module
  - Servo-motor driven
  - Synchronized "Push & Pull" label motion system
  - Continuous film tensioning control
  - Low thickness film handling
  - Precise pallet shaft self-positioning
  - Quick release for change-over parts
  - Horizontal and vertical positioning
  - "Non stop" production
  - "Maintenance free"



- Self Adhesive (PS) module
  - Very solid base support stainless steel construction
  - Self-drive system by means of servo-motor
  - 4 axis fine tuning positioning
  - Linear slide guide support for ergonomic change over



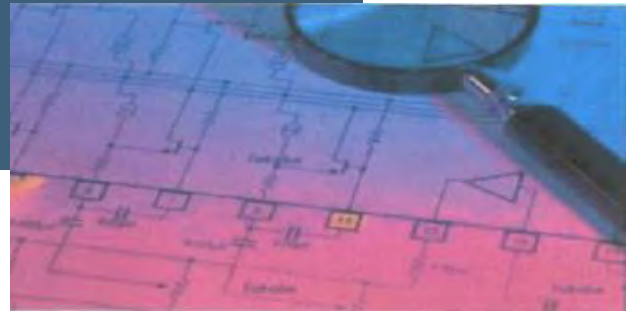
- Self Adhesive (PS) module
  - Non stop label reel change over



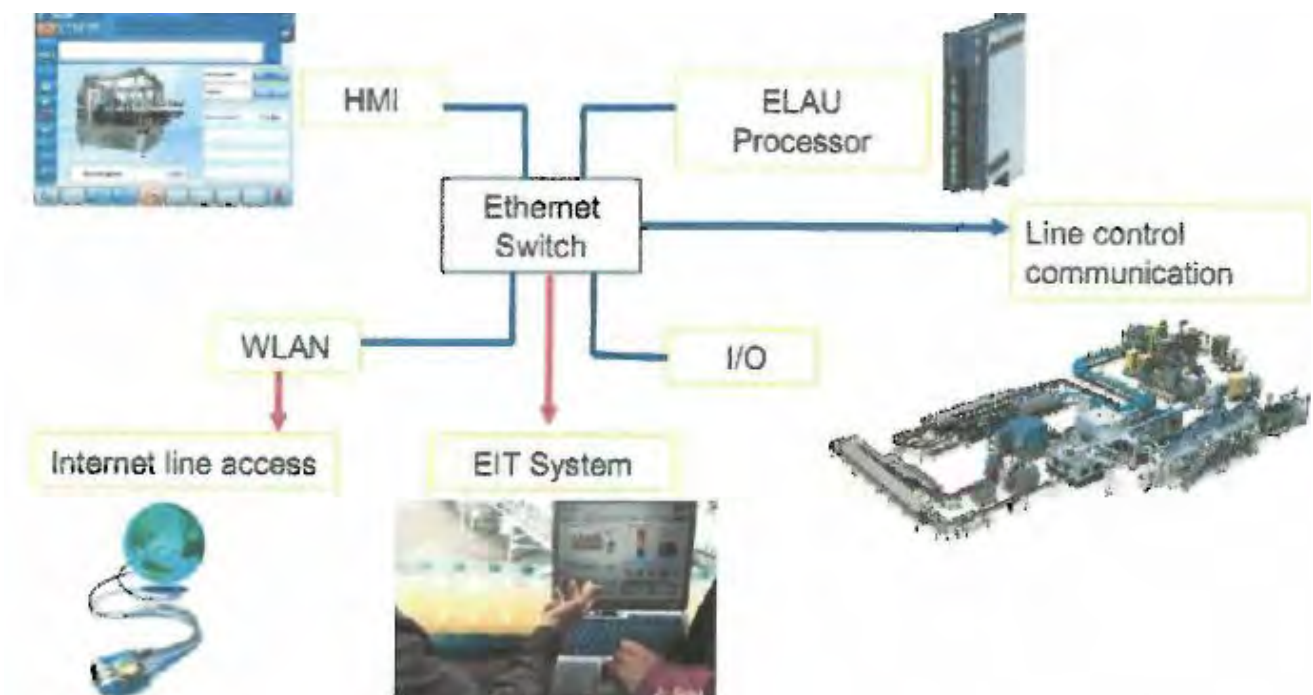
**For further information Call: + 44 (0) 20 3206 1208**

**Email: [info@indassol.com](mailto:info@indassol.com)**

- Automation details for all models
  - CE standard
  - ELAU processor for servo-motors and machine control
  - B&R full colour touch screen operator panel
  - B&R remote I/O
  - Ethernet communication network
  - WLAN for remote control
  - Inverter Danfoss
  - On board stainless steel cabinet



- Automation Layout for all models



# Indassol

For further details please contact

John Moore  
jmoore@indassol.com  
+ 44 7771 515834



Industrial Asset Solutions Limited

Longcroft House, 2-8 Victoria Avenue  
Bishopsgate, London EC2M 4NS  
United Kingdom

Switchboard: + 44 (0) 20 3206 1208  
Email: [info@indassol.com](mailto:info@indassol.com)

[www.indassol.com](http://www.indassol.com)