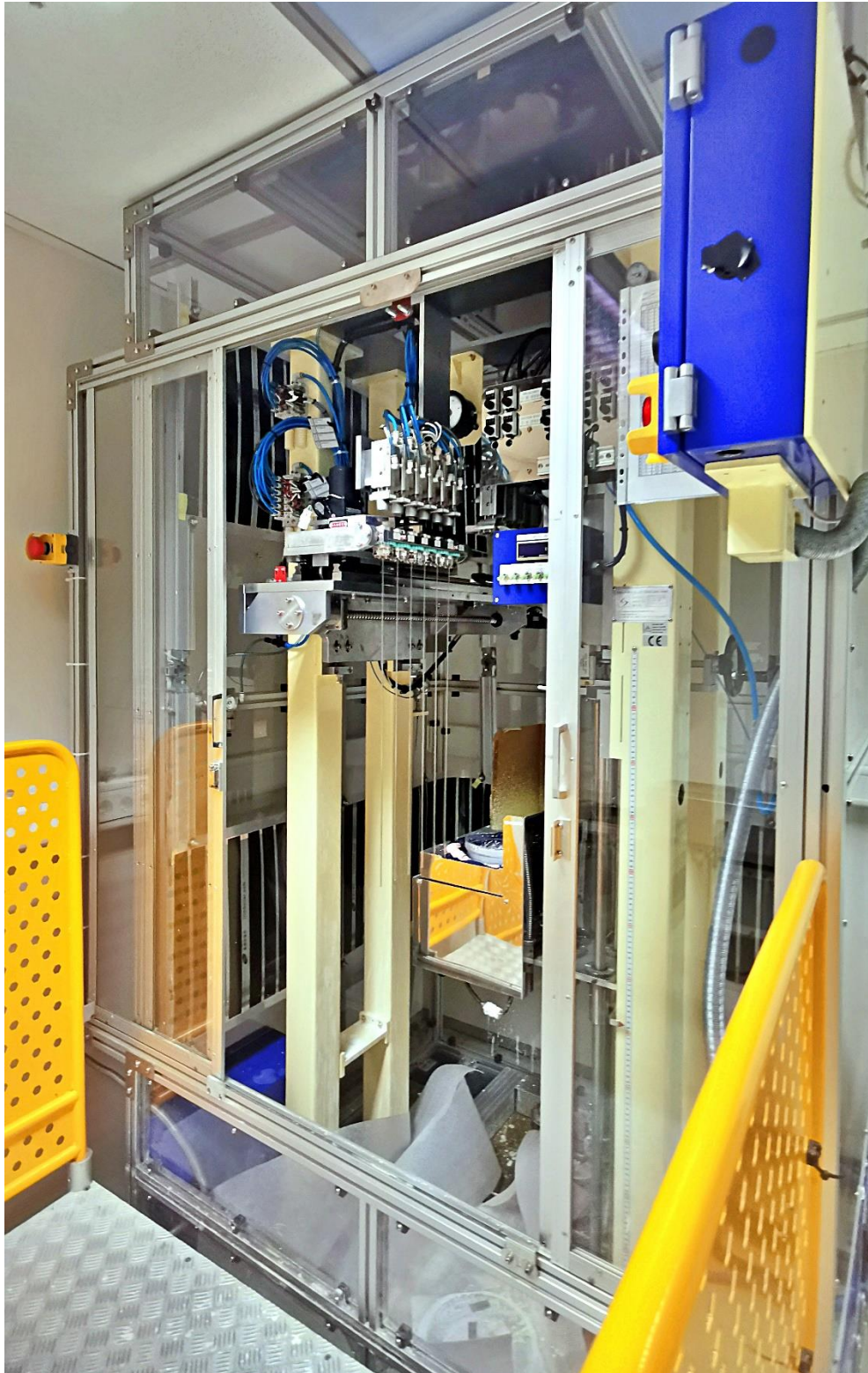


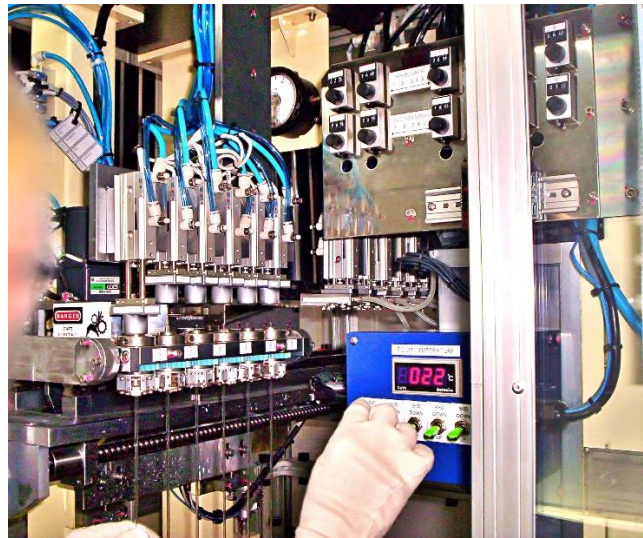
# Automatische Innen-Beschichtungs-Anlage für dünne Röhren ab 2mm Durchmesser

Für bis zu 6 Röhren gleichzeitig – bis ca. 120cm Länge



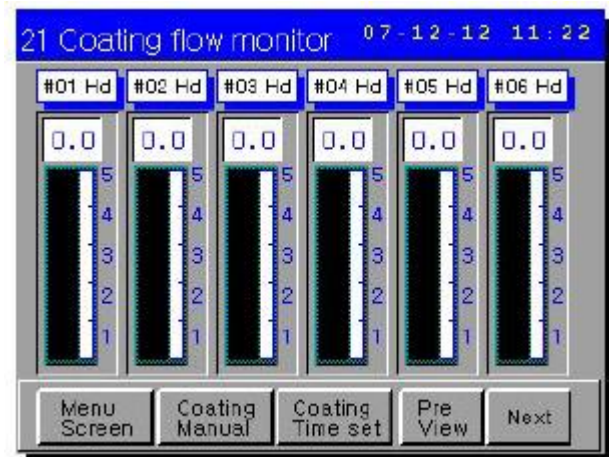


**Gebraucht in TOP-Zustand**



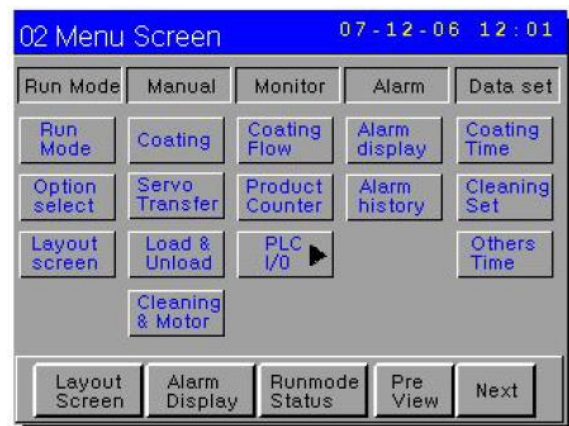
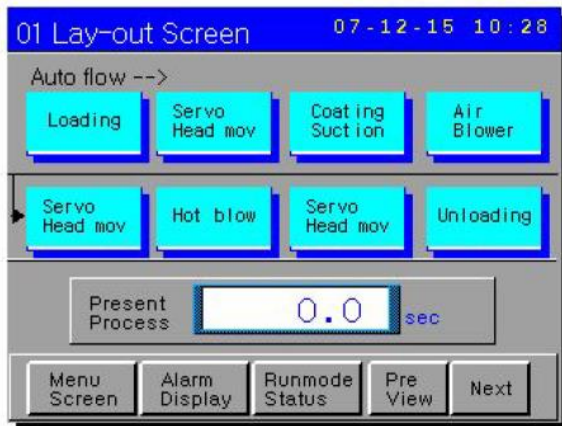
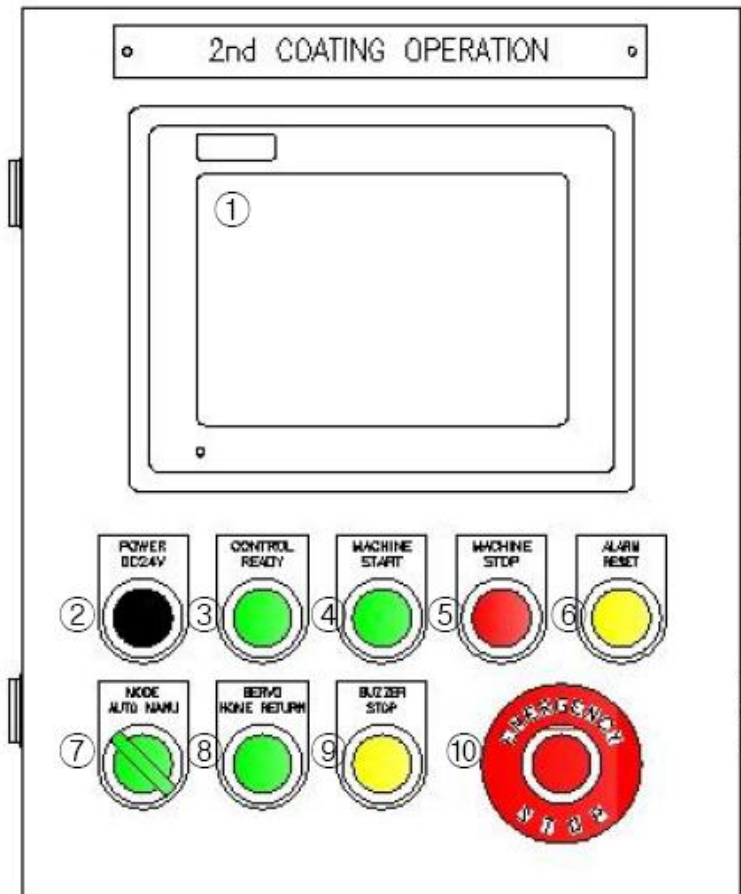
2. Operation

- 2-1 Check-up
- 2-2 Operation Panel Summary
- 2-3 Touch Screen
  - 2-3-1. LAY-OUT SCREEN
  - 2-3-2. MENU SCREEN
  - 2-3-3. RUN MODE STATUS
  - 2-3-4. COATING MANUAL
  - 2-3-5. SERVO DIVICE MANUAL
  - 2-3-6. LOADING MANUAL
  - 2-3-7. MOTOR MANUAL
  - 2-3-8. COATING FLOW MONITOR
  - 2-3-9. PRODUCTION COUNTER
  - 2-3-10. ALALRM DISPLAY
  - 2-3-11. ALARM HISTORY
  - 2-3-12. ALARM HELP
  - 2-3-13. COATING DATA SET
  - 2-3-14. CLEANING SET
  - 2-3-15. OTHERS TIME SET
  - 2-3-16. PLC INPUT 01~02
  - 2-3-17. PLC OUTPUT 01



 SHINJIN Mtec CO.,LTD/Global Lightz GmbH

**Abzugeben gegen Gebot**



Verwendete Baugruppen und Materialien von:

OMRON, MITSUBISHI, WEIDMÜLLER, LAPP, AUTONICS, FUJI, CKD, CHINO, MISUMI, KEYENCE, ULVAC und vielen anderen