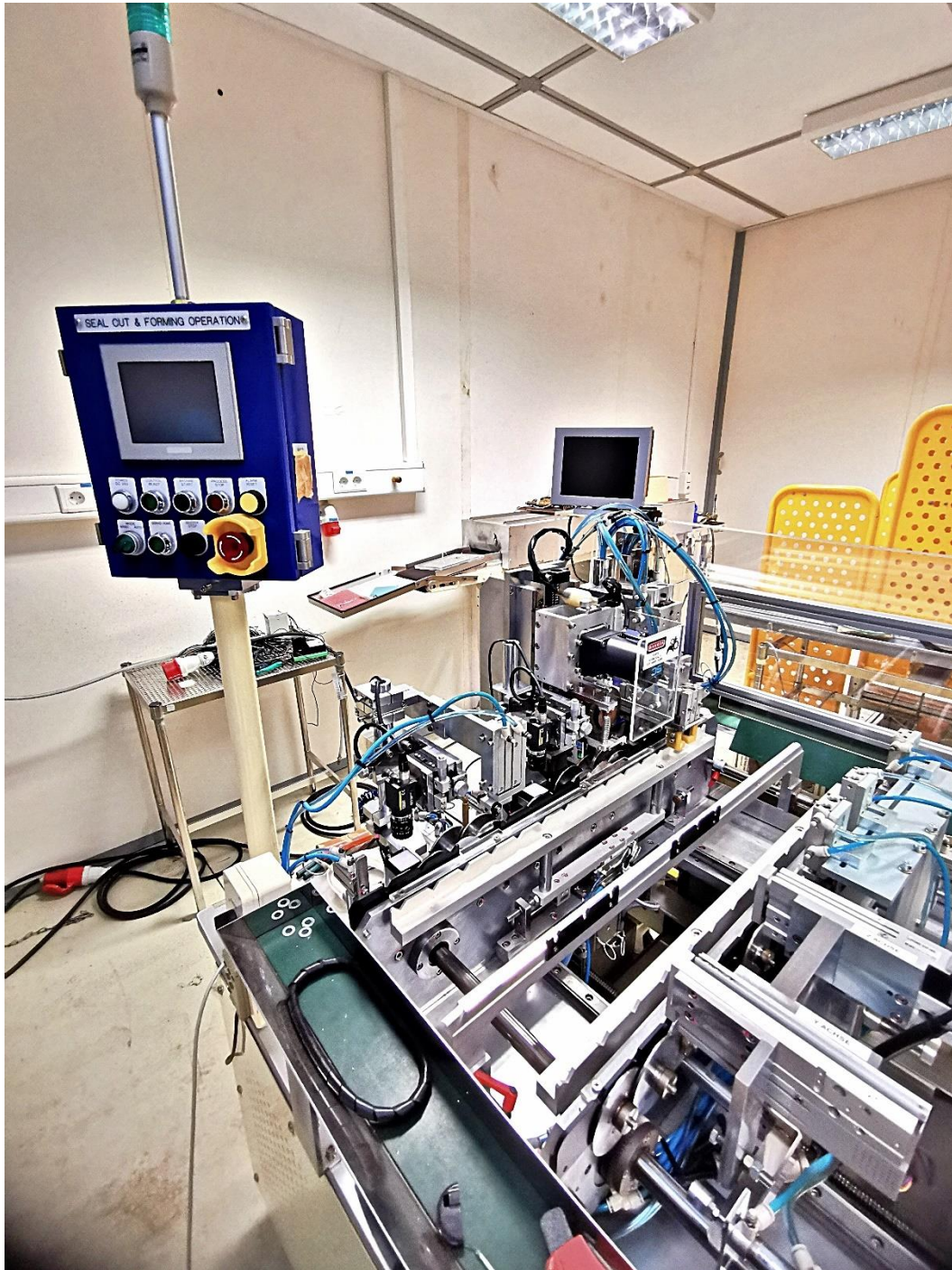
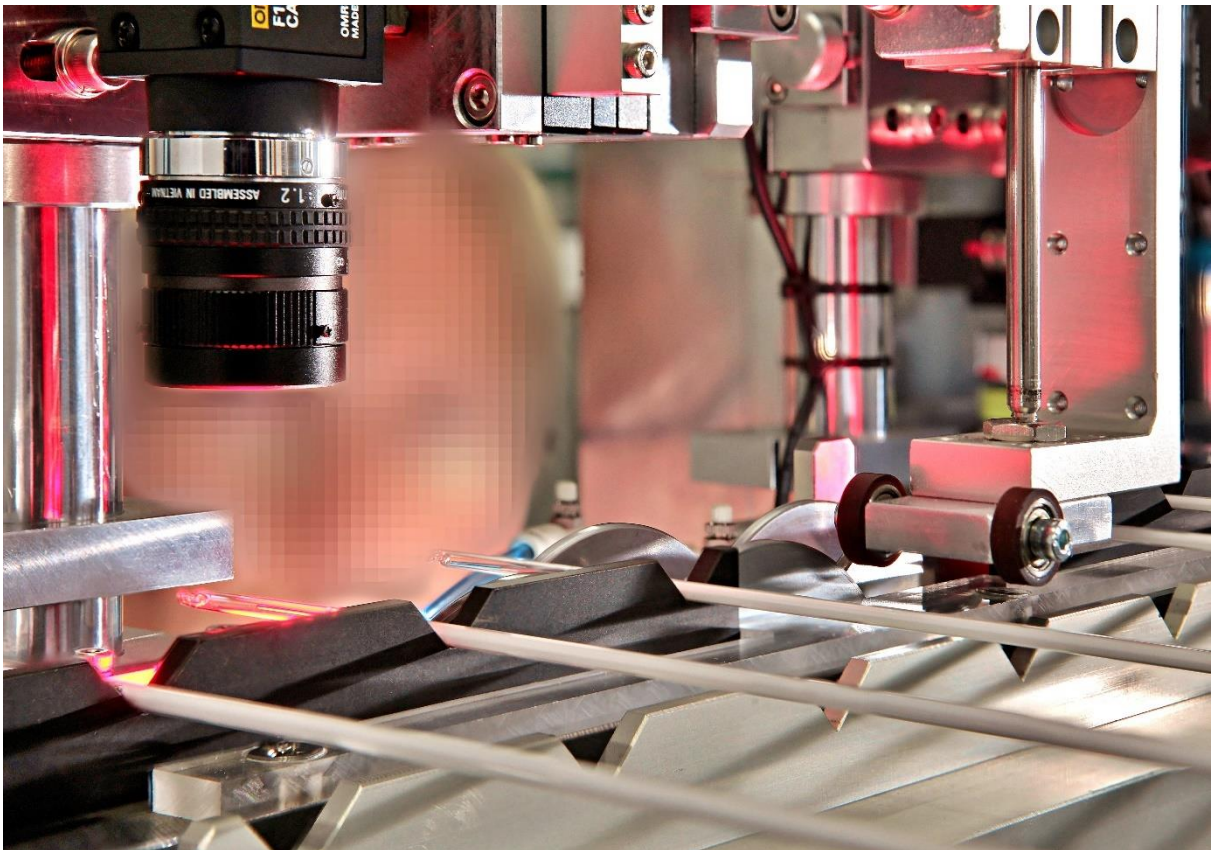
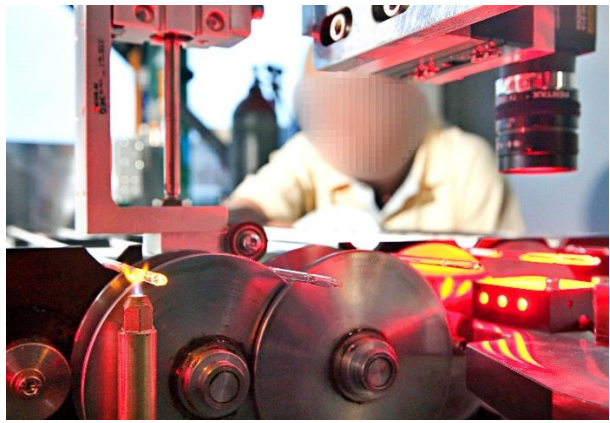


Automatische Seal-Cut Anlage zum Schliessen (verschmelzen) und Trimmen von beschichteten Röhrchen mit 2-stufiger OMRON-Vision-Control (KI)



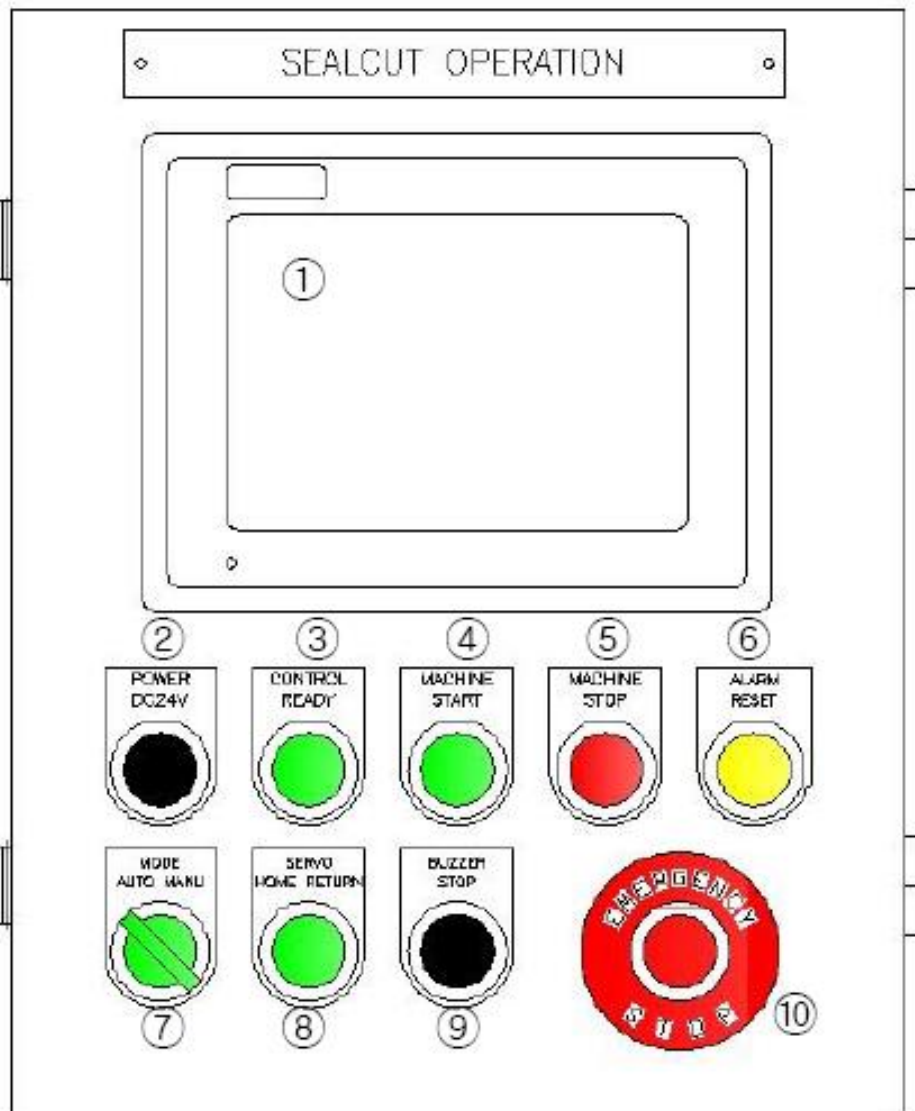
Abzugeben gegen Gebot

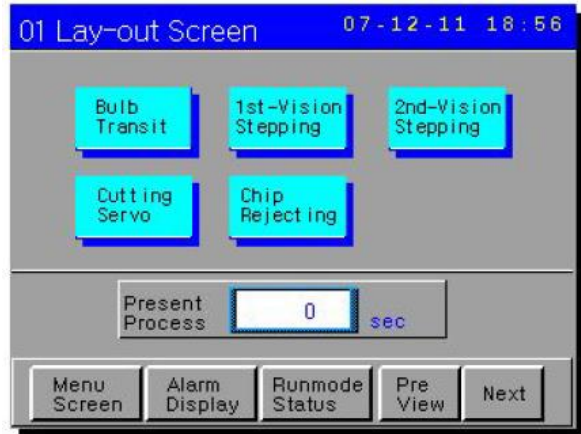
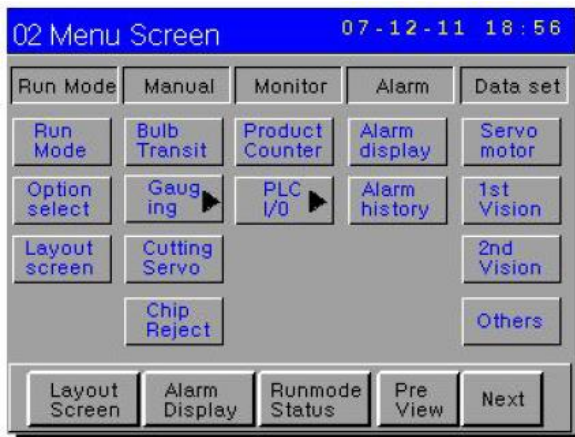


 SHINJIN Mtec CO.,LTD/Global Lightz GmbH

2. Operation

- 2-1 Check-up
- 2-2 Main Panel Summary
- 2-3 Operation Panel Summary
- 2-4 Touch Screen
 - 2-4-1. Lay- Out Screen
 - 2-4-2. Menu Screen
 - 2-4-3. Run Mode Status
 - 2-4-4. Option Select
 - 2-4-5. Bulb transit manual
 - 2-4-6. 1st Gauging Manual
 - 2-4-7. 2nd Gauging Manual
 - 2-4-8. Cutting Robot
 - 2-4-9. Production Count
 - 2-4-10. Alarm Display
 - 2-4-11. Alarm Help
 - 2-4-12. Alarm History
 - 2-4-13. Others data Set
 - 2-4-14. Servo data set
 - 2-4-15. PLC Input
 - 2-4-16. 1st/2nd Gauging set
 - 2-4-17. Chip reject manual





Verwendete Baugruppen und Materialien von:

OMRON, MITSUBISHI, WEIDMÜLLER, LAPP, APEX, FUJI, CKD, CHINO, MISUMI, IWASAE, SANWA, HONEYWELL und vielen anderen