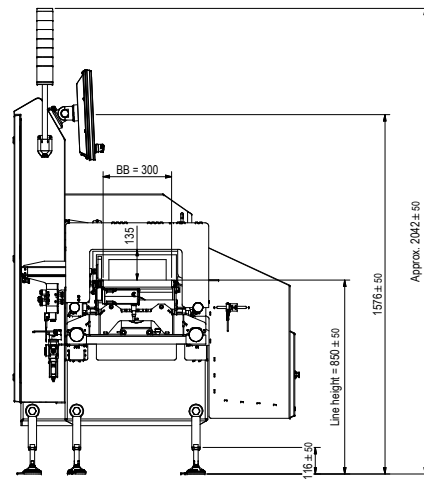
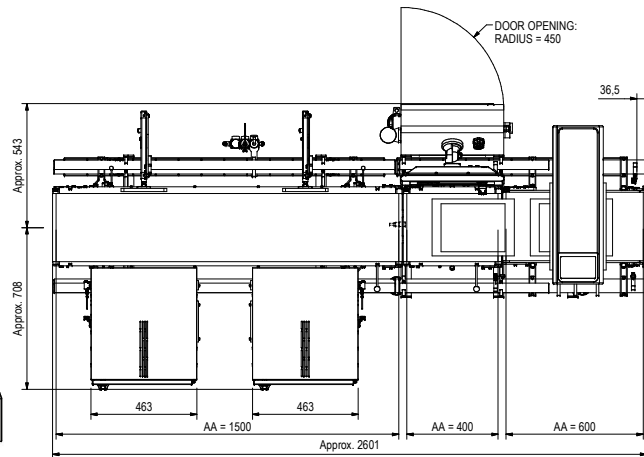
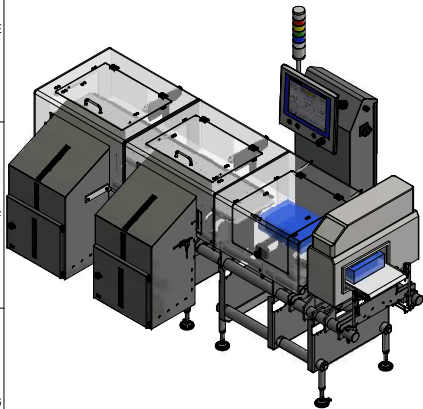


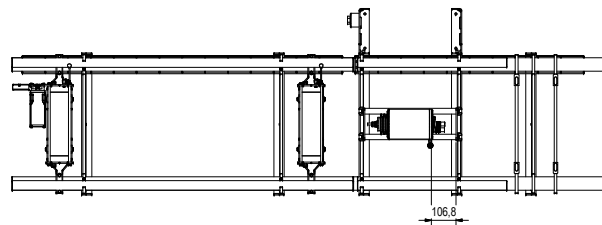
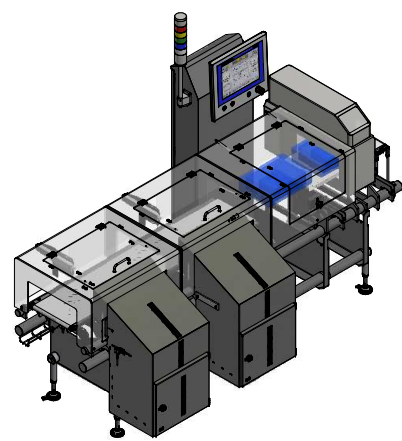
TRANSPORT DIRECTION



Approx. 2042 ± 50



DOOR OPENING:
RADIUS = 450



Copyright (ISO 16016)
All rights reserved. This drawing or sketch may not be reproduced nor disclosed to a third party without the prior consent of Mettler-Toledo Garvens GmbH and neither the receiver nor anybody else may misuse it for any other purpose.

Design modifications reserved

METTLER TOLEDO Policy is to provide guarding, where required, up to the normal envelope of our machine. We do not provide guarding beyond the normal envelope, because that guarding is generally over machinery supplied by others and could introduce or obscure potential hazards beyond our control. For further guidance in this area, consult your equipment safety expert and the latest applicable regulations and standards (e.g., ANSI B155-2016, Annex E and Guide to application of the Machinery Directive 2006/42/EC - 2nd Edition - June 2010 §38).

Order-no.: 144150013
SAP Line Item(s): 10
The **Serial no.** consists of **order number and line item!**
Transport direction: Right-Left
Line height: 50 mm: 850 mm
Set up: as shown in drawing

METTLER TOLEDO <small>GBU Checkweighing, G 311 BE Clean</small>		Created by lindemann-1 Date: 13.10.2020	Changed by lindemann-1 Date: 13.04.2020	Design Revision Description ORIGINAL
Title C M3571	Part (See parts list)	Design ID D000518533	Revision A	Sheet 1 of 1
Material (See parts list)	Material Norm	DIMENSION TOLERANCE TOLERANCES AS PER ISO 2768 - mK EDGES AS PER ISO 13715	Order Number 24003510	Sheet Size A1