



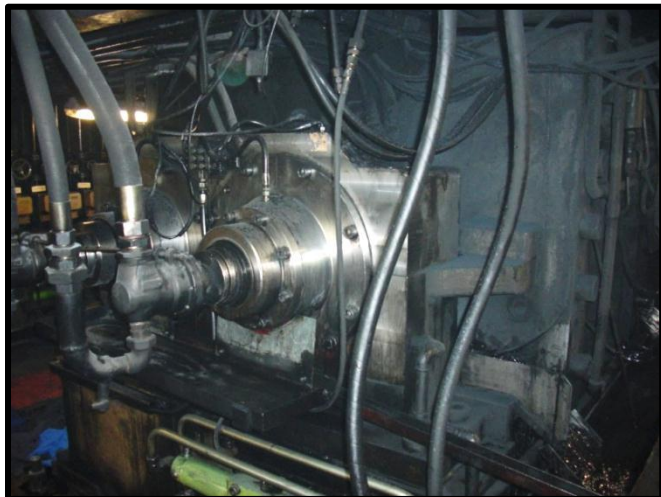
Technical Specification

Item 110XXG0003

GK-320E Internal Mixer

Manufactured by:	Werner & Pfleiderer
Year of Manufacture:	1992
	New Chamber and Hopper from 2004
Model:	GK - 320E
Used For:	Master batch /Final Batch; Black Fillers
	Polymers: Mainly NBR & CR
Total / Useable Volume:	320 / 208 Liter
Type of Rotors:	Intermeshing, 2 Wings, PS3+ Type
Hopper:	RAM Hydraulically Operated
Hydraulic Pack:	Not Available
Motor:	Not Available
Motor-Gear Couplings:	Not Available
Gearbox:	Not Available
Chamber Couplings:	Available
Electricals :	Not Available
Controls:	Not Available
Base Frame:	Available

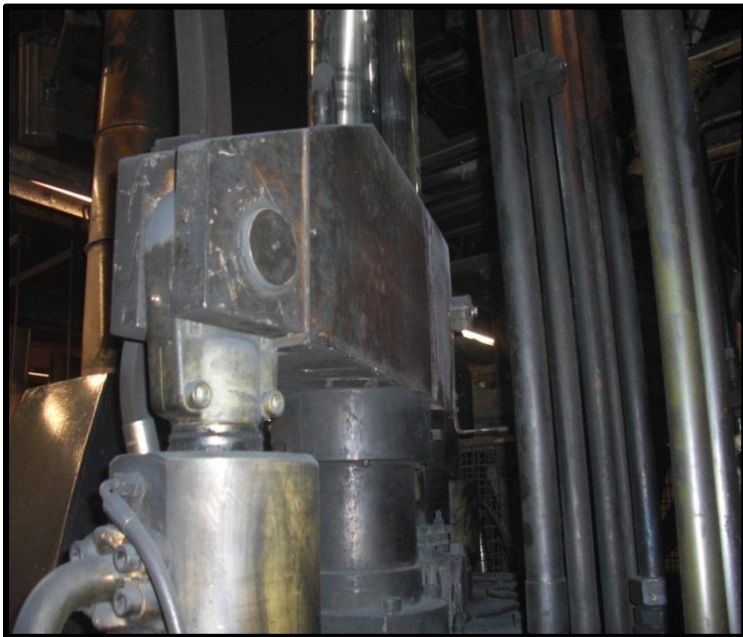
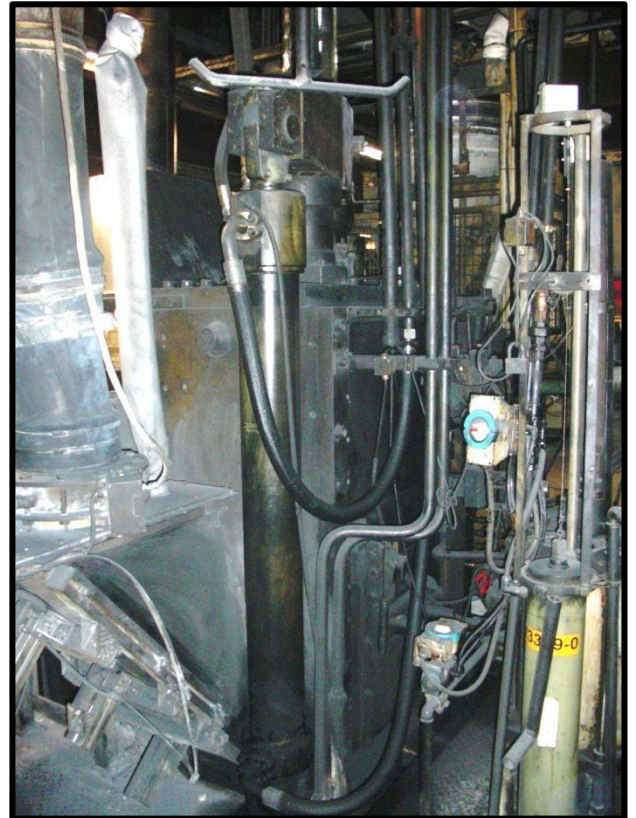
- Optional: Set of Dust Seals





Pelmar Engineering Ltd.

3 Bustenai St., P.O.Box 2418, Ramat-Hasharon, 47302 Israel | Tel: +972 (3) 540 9277 | Fax: +972 (3) 549 3520
Email: mail@pelmar.com | www.pelmar.com



 Pelmar Engineering Germany GmbH |  Pelmar Engineering Italia Srl

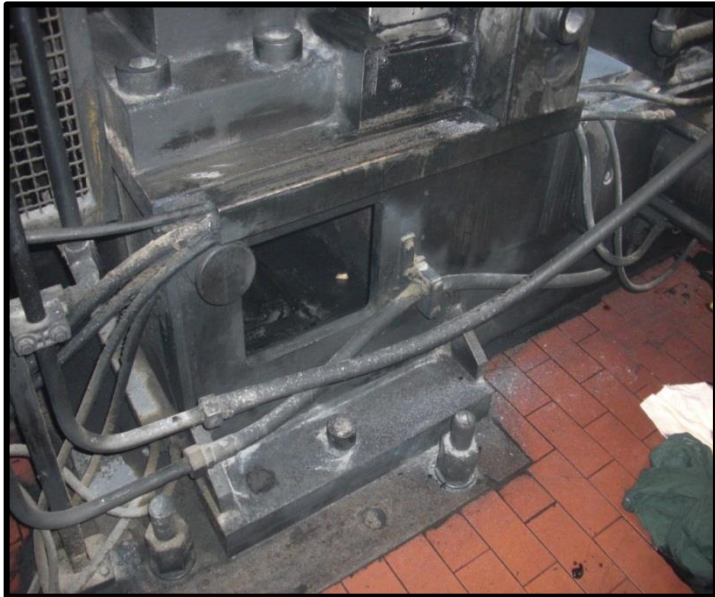
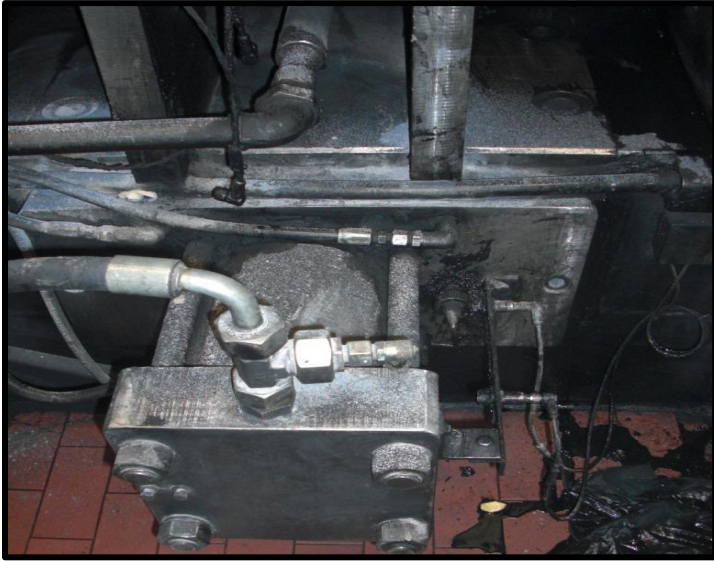
 Pelmar Sudrishti Engineering India Pvt. Ltd. |  Pelmar Engineering (UK) Ltd. |  Pelmar USA, LLC

 Beijing Covance Engineering Co. Ltd. |  Pelmar Engineering Spain |  Pelmar Engineering Turkey



Pelmar Engineering Ltd.

3 Bustenai St., P.O.Box 2418, Ramat-Hasharon, 47302 Israel | Tel: +972 (3) 540 9277 | Fax: +972 (3) 549 3520
Email: mail@pelmar.com | www.pelmar.com



 Pelmar Engineering Germany GmbH |  Pelmar Engineering Italia Srl

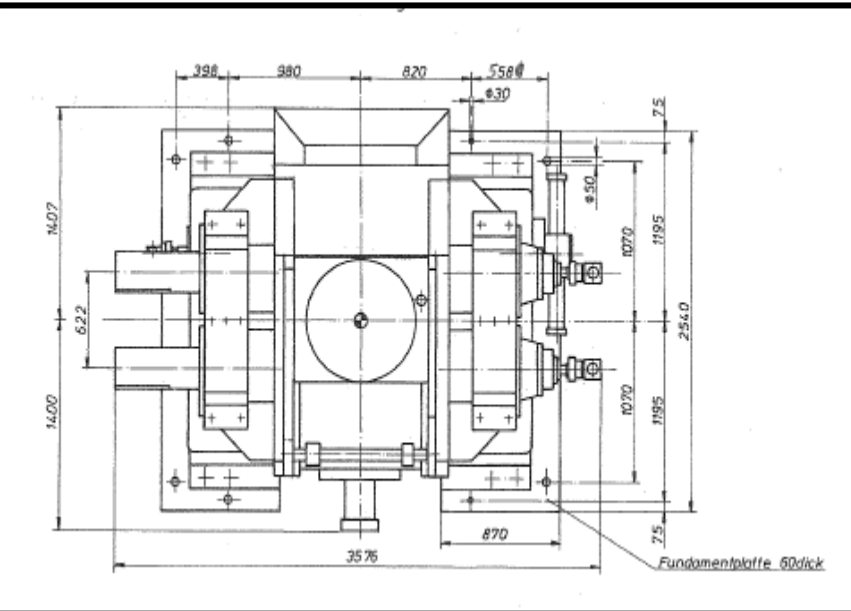
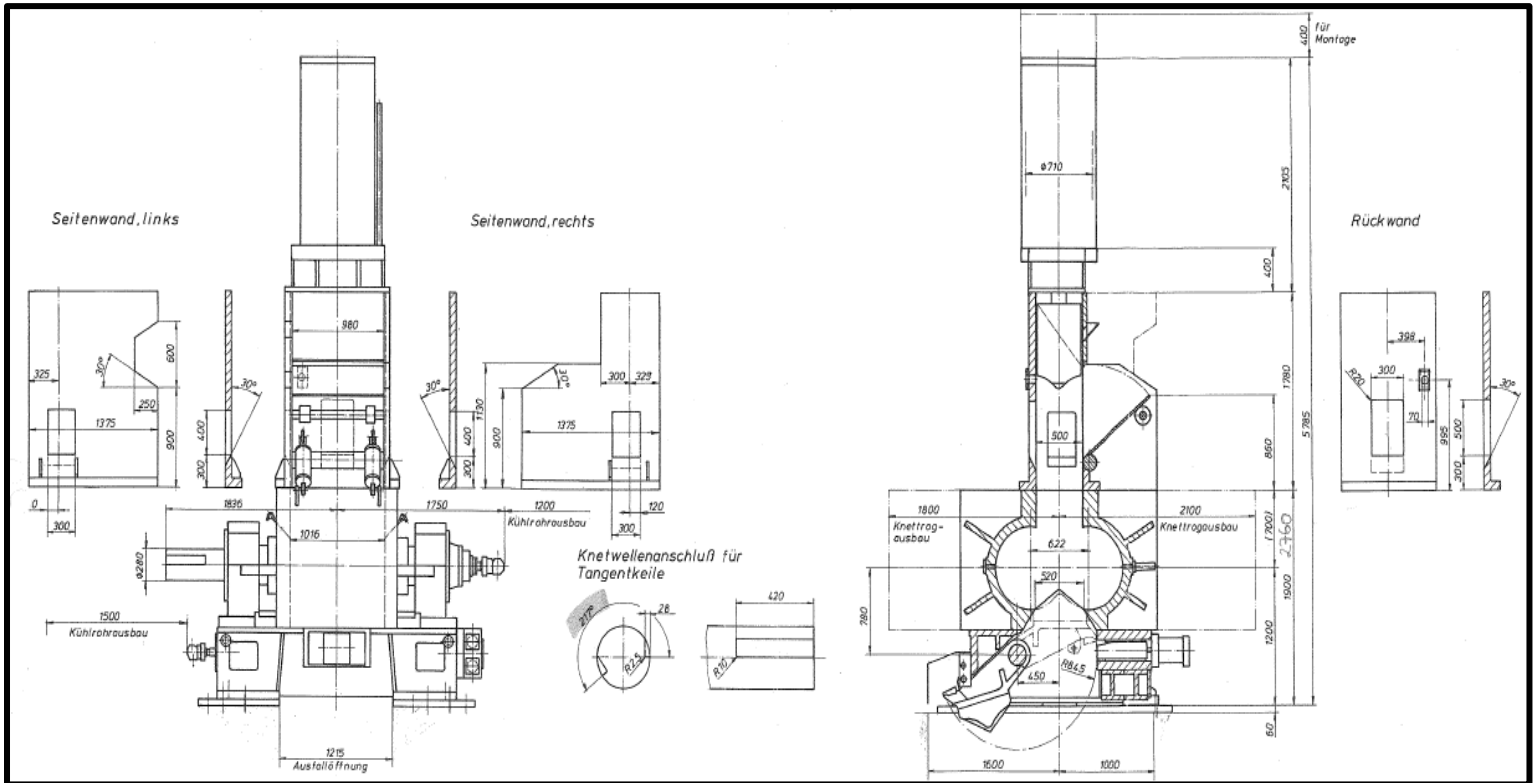
 Pelmar Sudrishti Engineering India Pvt. Ltd. |  Pelmar Engineering (UK) Ltd. |  Pelmar USA, LLC

 Beijing Covance Engineering Co. Ltd. |  Pelmar Engineering Spain |  Pelmar Engineering Turkey



3 Bustenai St., P.O.Box 2418, Ramat-Hasharon, 47302 Israel | Tel: +972 (3) 540 9277 | Fax: +972 (3) 549 3520

Email: mail@pelmar.com | www.pelmar.com



 Pelmar Engineering Germany GmbH | Pelmar Engineering Italia Srl

 Pelmar Sudrishti Engineering India Pvt. Ltd. |  Pelmar Engineering (UK) Ltd. |  Pelmar USA, LLC

 Beijing Covance Engineering Co. Ltd. | Pelmar Engineering Spain | Pelmar Engineering Turkey